

# Gujarat Petroleum, Chemical and Petrochemical Investment Region (PCPIR)



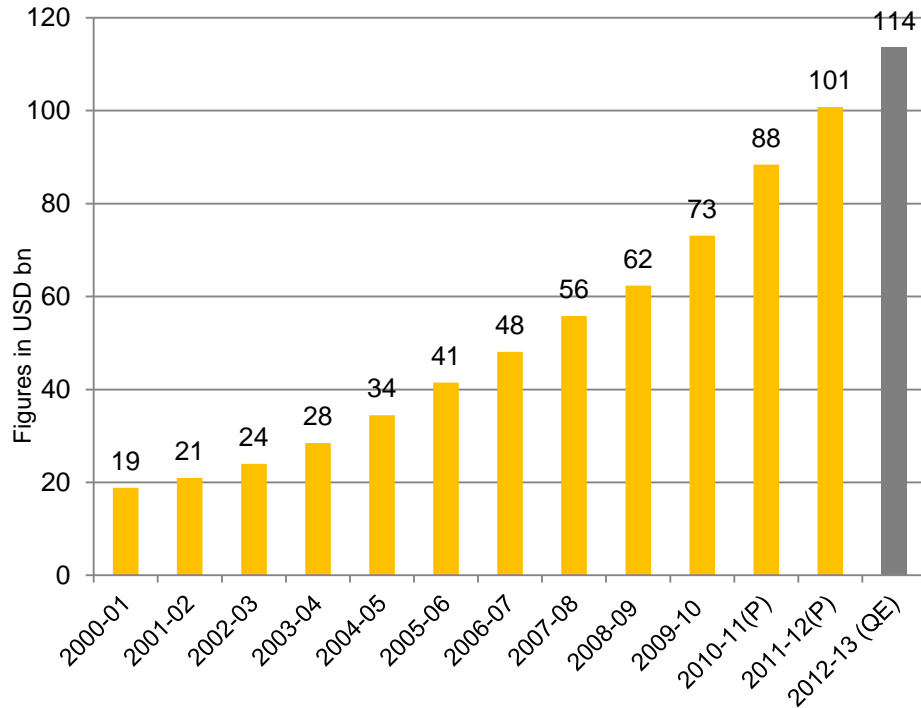
**Gujarat Industrial Development Corporation**

# Gujarat's Industry Climate

## GSDP Growth Trend

GSDP in 2012-13 QE has been estimated at USD 114 bn, growth of 12.7% during the year

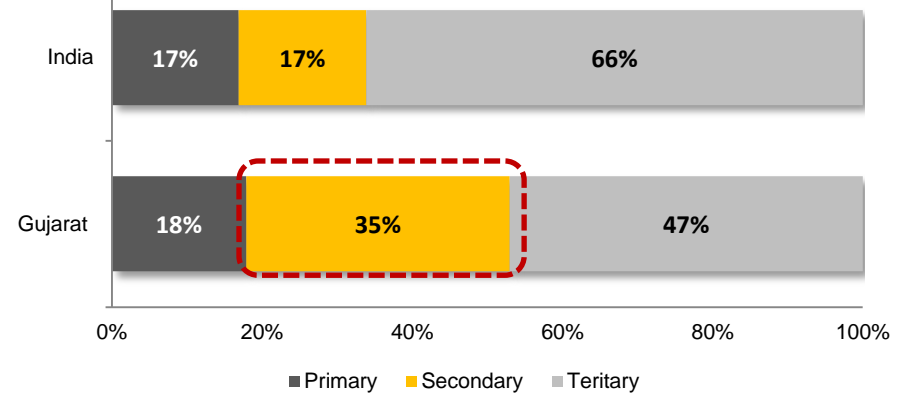
GSDP Growth Trend (at current market price)



(P) = Provisional, (QE) = Quick Estimates

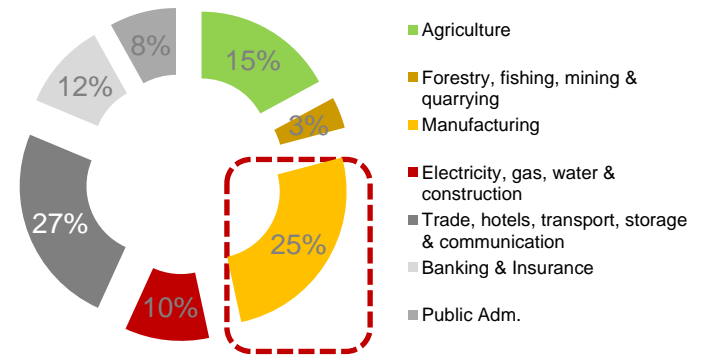
### Gujarat leads the country in Secondary Sector

Sectoral contribution to GDP 2012-13 (QE)



### Manufacturing accounts for 25.3% of the total GSDP

Percentage of the Sectoral Composition of GSDP at Current Prices



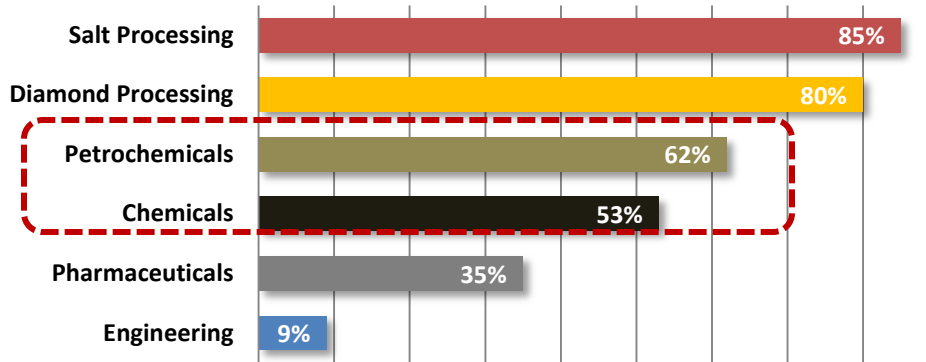
Source: Gujarat Socio Economic Review 2013-14

Currency Rate : 1 USD = 59 INR

# Strong Industrial Base

Gujarat's share in the world

## Contribution of Gujarat to India - Sectors



World's largest **grass root petroleum refinery** at Jamnagar

India's first **LNG Chemical Port** terminal at Hazira

World's largest producer of **processed diamonds**

Amul ranked world's top 21 largest dairy business by International Farm Comparison Network (IIFCN)

World's largest **producer of caster & cumin**

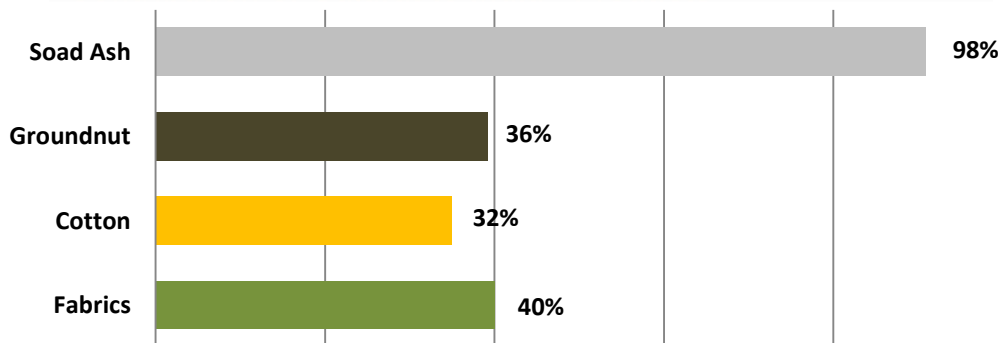
World's largest **gas based single location sponge iron plant**

World's 3<sup>rd</sup> largest **denim**

World's largest **single location copper smelter** at Dahej

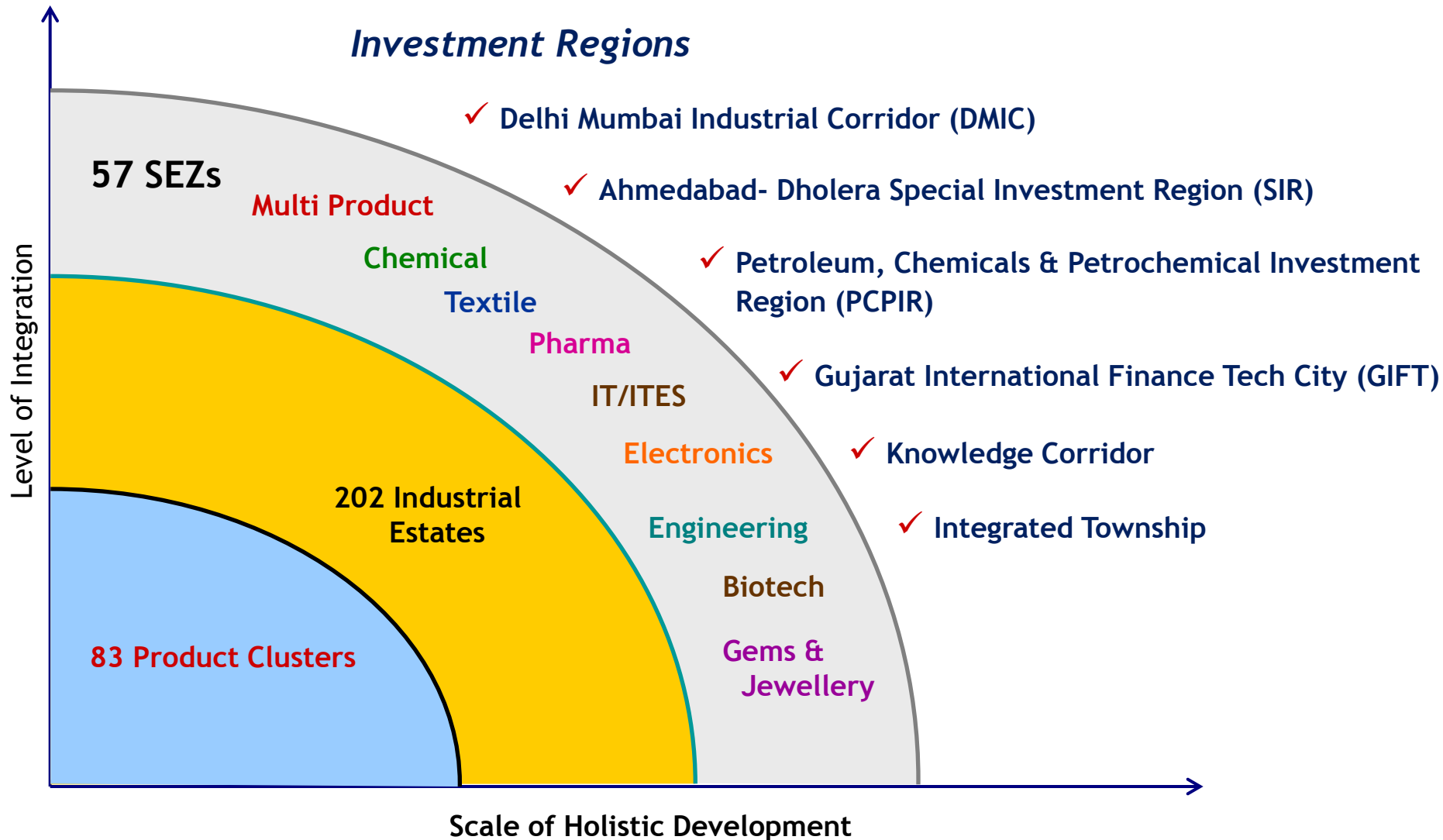
World's largest **ship breaking and dismantling hub**

## Contribution of Gujarat to India - Products



# Industrial Development

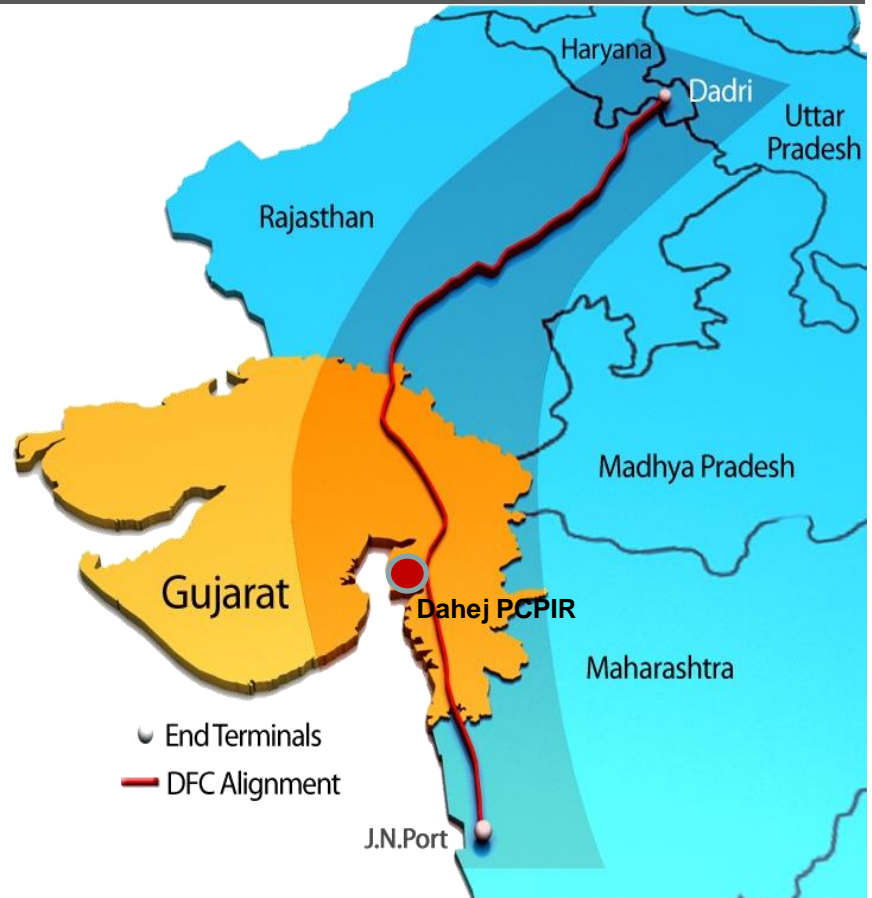
## A Progressive Approach



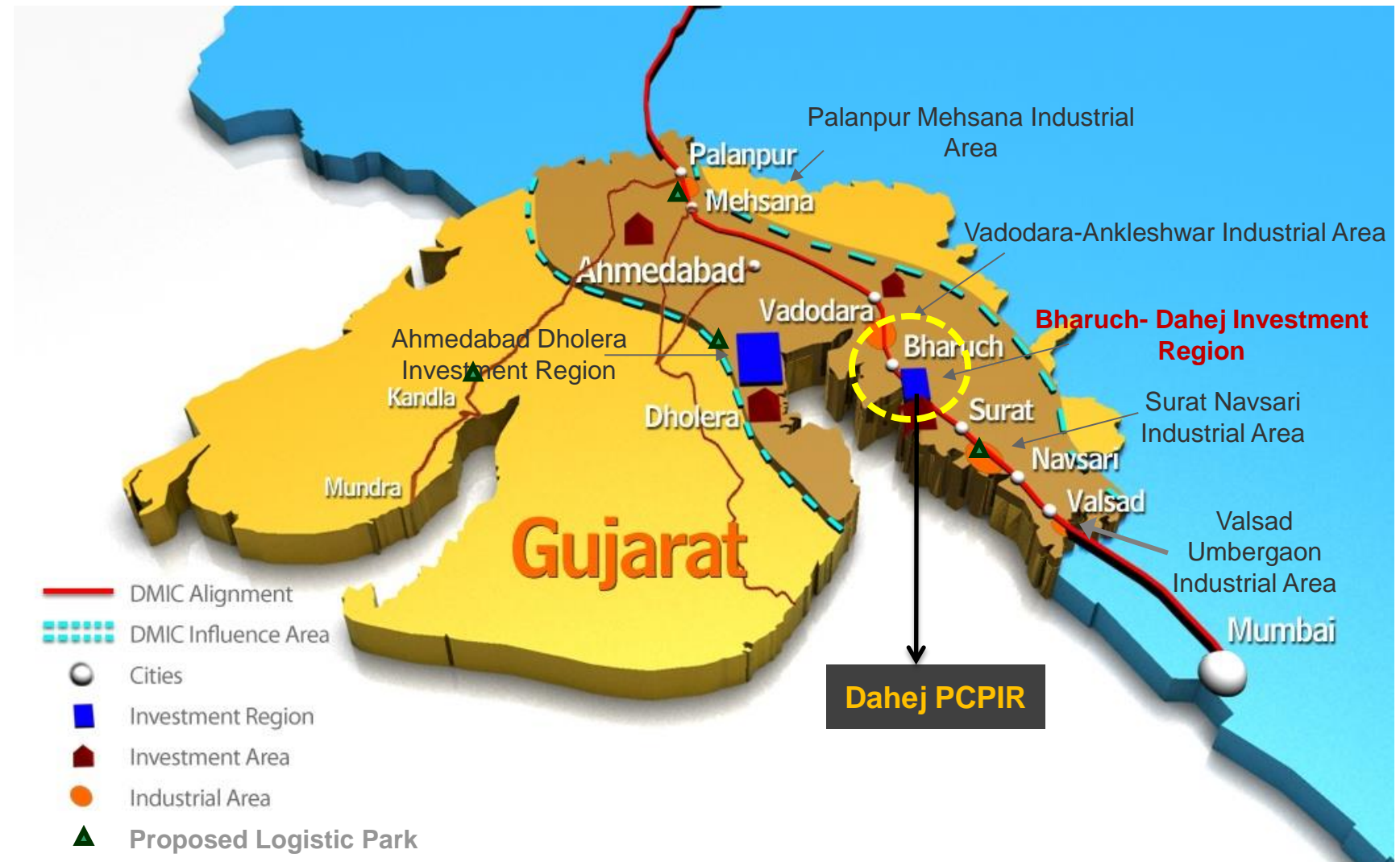
# Delhi Mumbai Industrial Corridor (DMIC)

**A high impact industrial area within 150 km distance on both sides of the *Dedicated Freight Corridor (DFC)*, with an investment potential of US\$ 90 billion**

- ▶ Being laid down between Delhi and Mumbai, **DFC is a new rail transportation system with high axle, multi modal and computerised features**
- ▶ 38% (564 km) of the 1500 km length of DFC will pass through Gujarat
- ▶ DMIC area to be developed as '**Global Manufacturing & Trading Hub**' in two phases (6 nodes) – supported by world class infrastructure & enabling policy framework
- ▶ Expected to **triple industrial output in five years**
- ▶ The influence area covers
  - 62% of total area of Gujarat (18 out of 33 districts within the influence area)
  - Investment potential for Gujarat is US\$ 50 bn (60% of total investment potential in DMIC)



# DMIC: Proposed Modules in Gujarat

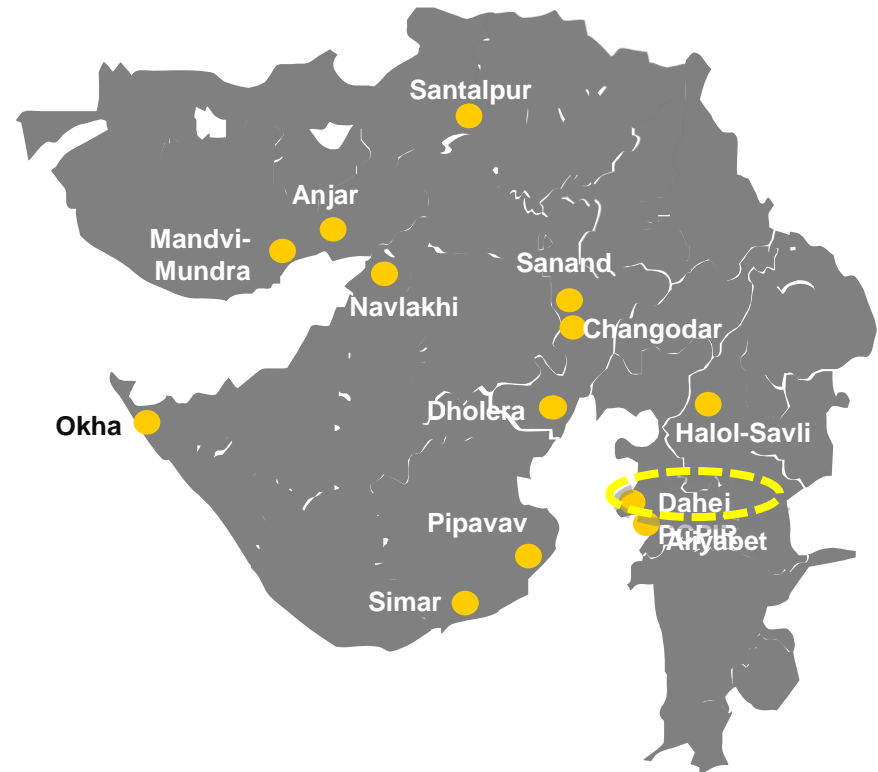


# Gujarat - Special Investment Regions

Gujarat SIR Act 2009, enacted to provide for establishment, operation, regulation and management of large size Investment Regions with an area of over 100 sq kms. These areas will be supported by world class infrastructure, premium civic amenities, centers of excellence and pro-active policy framework

## 14 Special Investment Regions (SIRs) planned in the State

Gujarat Infrastructure Development Board (GIDB)	
Dholera Special Investment Region	879 sq kms
Becharaji – Mandal Special Investment Region	509 sq kms
Gujarat Industrial Development Corporation (GIDC)	
Petroleum Chemicals & Petrochemicals Investment Region	<b>453 sq kms</b>
Halol-Savli Special Investment Region	123 sq kms
Santalpur Special Investment Region	186 sq kms
Viramgam Special Investment Region	190 sq kms
Changodar Special Investment Region	319 sq kms
Navlakhi Special Investment Region	182 sq kms
Simar Special Investment Region	84 sq kms
Pipavav Special Investment Region	147 sq kms
Anjar Special Investment Region	237 sq kms
Okha Special Investment Region	196 sq kms
Aliya Bet Entertainment and Eco PCPIR	169 sq kms
Gujarat Maritime Board (GMB)	
Mundra-Mandvi Special Investment Region	502 sq kms



# PCPIR

## A Snapshot

<b>Location</b>	Dahej, Bharuch district
<b>Area</b>	453 sq. km.
<b>Investment Made &amp; Committed (Manufacturing)</b>	INR 1,65,596 crores (USD 28 billion)
<b>Units Commenced Production</b>	INR 58,627 crores (USD 10 billion)
<b>Units Under Implementation</b>	INR 1,06,969 crores (USD 18 billion)
<b>Investment on Infrastructure Development</b>	INR 10,994 crores (USD 2 billion)

**Anchor Tenant**  
ONGC Petro additions  
Limited (OPaL)

Proposed Investment:  
**INR 27,110 crores (USD 4.5 billion)**  
Actual Investment as on 31.03.2014:  
**INR 18,837 crores (USD 3.1 billion)**  
Tentative commissioning: **Q1 2015**





# PCPIR Advantage

Concentration of Petroleum, Chemical and Petrochemical estates around PCPIR

Rich natural resources and feedstock

All infrastructure - road, rail, port, power, gas, water - in place, with planned up-gradation

Chemical Port and Storage Facility

LNG terminal

PCPIR specific infrastructure - effluent disposal pipelines, solid waste disposal sites

Quality Work Force, Peaceful Labour



Gujarat accounts for only **0.5% of mandays lost** in the country while having 16% of industrial production

# Employment Generation in PCPIR

Existing industrial units have given direct employment to 13,220 persons and indirect employment to 46,270 persons

Additional 30,000 direct employment will be created in the upcoming units. This will provide 90,000 indirect job opportunities

Additionally thousands of persons are employed in construction activities of industrial units, residential townships, infrastructural works etc.

The large scale economic and industrial activities undertaken in PCPIR would also generate self employment opportunities



# Leading Companies in the Dahej PCPIR

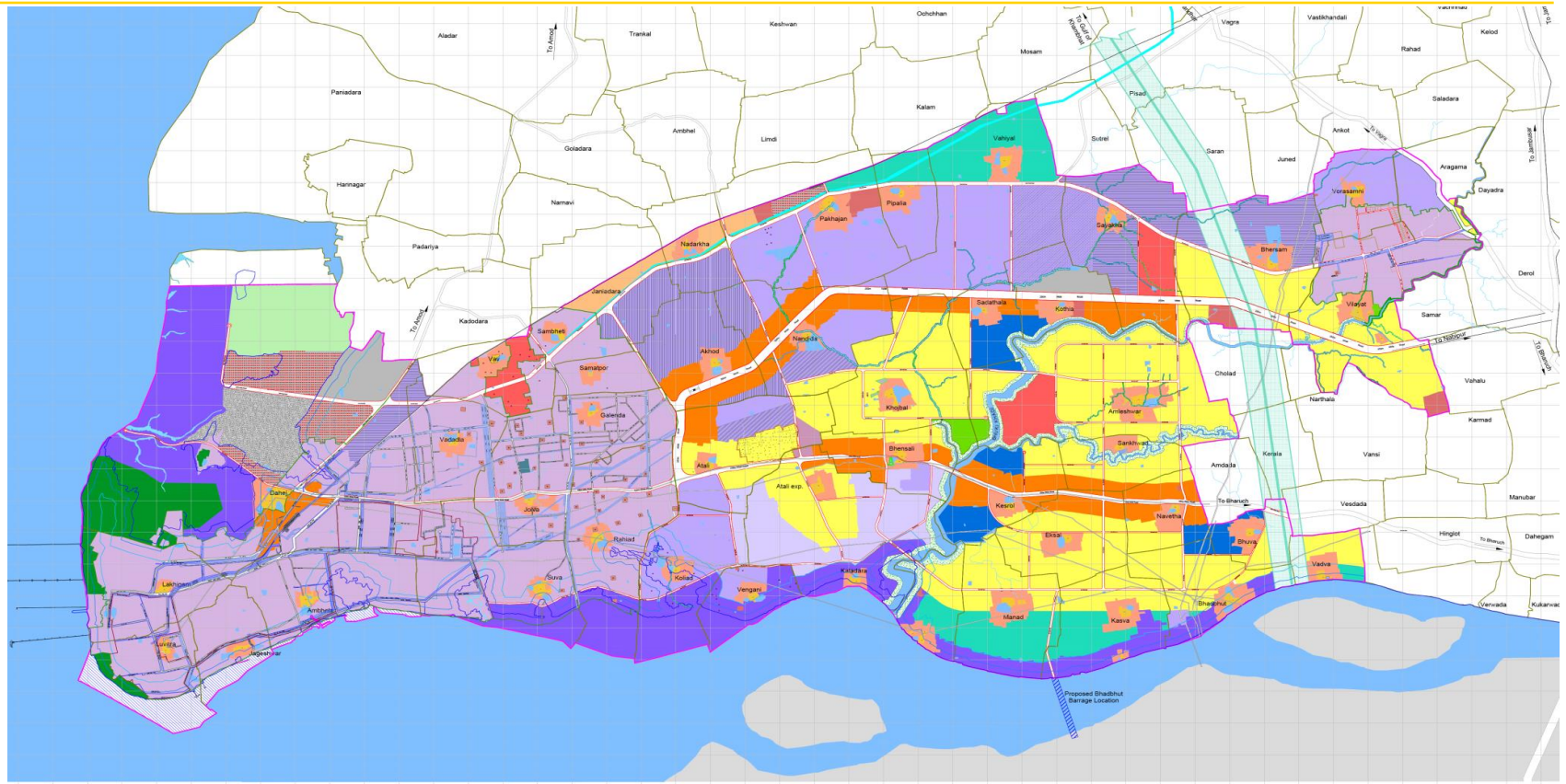
## Commissioned



## Under Implementation



# PCPIR Development Plan



Legend

Reference		CRZ (200m)		Proposed Landuse Zone		Ecozone		Proposed Road	
	GPCPIR Boundary		CRZ (200m)		Residential		Ecozone		Proposed 30M Wide Road
	Existing Gamtal		ONGC Well		GIDC Estate		Bhahu Khadi River Development		Proposed 20M Wide Road
	Gamtal Neem		Salt Pan		Power Plant & Large Scale PCP Industries		Forest		Proposed Culvert
	Village boundary		River		Medium scale PCP Industries		Agricultural		GIDC Utility Corridor
	GIDC Estate Boundary		Sea		Small scale PCP Industries		Submerged Land		Proposed 250M Wide Road
	Dahaj SEZ Boundary		Lake/Pond		Non Polluting Industries		High Tide Line (HTL)		Proposed 150M Wide Road
	Survey boundary & number		SNIN Canal		Engineering Industries		CRZ (200m)		Proposed 120M Wide Road
	Existing SH-6		Submerged Land		Port/Ship-building & Allied Activities, CRZ Related Permissible Activities & Salt Pans				Proposed 60M Wide Road
	GIDC Estate Roads		High Tide Line (HTL)						Proposed 60M Wide Road
	Railway Station		CRZ (200m)						Proposed 45M Wide Road



# Investment by Anchor Tenant - OPaL



Dahej SEZ Limited, a joint venture company of GIDC and ONGC, has developed a 1,719 hectare multi-product SEZ.

ONGC Petro additions Ltd (Opal), a joint venture company promoted by ONGC, GAIL & Gujarat State Petroleum Corporation (GSPC), is investing INR 27,110 crore in a world scale 1.1 MMTPA multi-feed cracker in the SEZ

**The investment made by OPaL till March 2014 is INR 18,837 crore. The tentative line to be to be commissioning is Q1 2015**

ONGC has set up C2/C3 extraction plant at Dahej – construction completed. Investment is about INR1,000 crore



# PCPIR Infrastructure Development

## Ports



### Existing

- ▶ Adani Petronet (Dahej) Port with total Capacity of 11 MMTPA
- ▶ Gujarat Maritime Board (GMB) Port
- ▶ Liquid Chemical Terminal (3.86 MMTPA) of GCPTCL
- ▶ LNG port (10 MMTPA) of LNG Petronet Ltd
- ▶ Liquid Fuel jetty (2.12 MMTPA) of Reliance
- ▶ Solid cargo jetty (5 MMTPA) of Birla Copper
- ▶ Sandesara Port at Dahej

### New Developments

- ▶ Ro-Ro Ferry Service Terminal by GMB (construction work started)
- ▶ Development of jetty for handling ODC (Over Dimensional cargo) in Joint Venture with Dahej SEZ Ltd.

### Proposed

- ▶ Development of Marine Shipbuilding Park (MSP) at Dahej
- ▶ 52 MMTPA ports by Sandesara Group (Solid Cargo, Liquid Cargo and Container Port)

# PCPIR Infrastructure Development

## Road, Air & Rail



### Road

#### Existing

- ▶ 50 km of four-lane Dahej-Bharuch State Highway connecting six lane Delhi-Mumbai National Highway and National Expressway

#### New Developments

- ▶ GoG is upgrading the 4 lane State Highway from Bharuch to Dahej to 6 lane. The project cost is INR 192.40 crore. The work is in progress. Entire work is expected to get completed by Dec 2014.

#### Proposed

- ▶ Ahmedabad-Vadodara National Expressway to be extended to Mumbai



### Air

#### Existing

- ▶ 250 km from international airport at Ahmedabad
- ▶ 90 km from domestic airport at Vadodara
- ▶ 85 km from domestic airport at Surat

#### Proposed

- ▶ Greenfield airport for PCPIR
- ▶ Airstrip at Ankleshwar



### Rail

#### Existing

- ▶ Connected to Delhi – Mumbai Broad Gauge railway line at Bharuch
- ▶ Bharuch - Dahej rail line (62 km)

#### Proposed

- ▶ Delhi-Mumbai Dedicated Freight Corridor (DFC) will touch the PCPIR on the eastern side
- ▶ Bharuch-Dahej broad gauge line to be connected to the DFC at Dayadra Jn.

# PCPIR Infrastructure Development

## Power



### Existing

Power available from :

- ▶ Two 220 KV sub-stations located at Dahej & Vilayat within PCPIR
- ▶ Four 66 KV substations located at Dahej, Luna, Bhensali & Vilayat within PCPIR

### New Developments

- ▶ Gujarat Energy Transmission Corporation Limited (GETCO) has started construction for setting up a sub-station of 220 KVA to be operational by March 2015.
- ▶ 1600 MW gas based by Torrent Power in Dahej SEZ. The first phase of 400 MW is under trial.
- ▶ Construction of 2640 MW coal based power plant of Adani Power is in progress

### Proposed

- ▶ Two 220 KV & Seven 66KV substations are planned in Dahej & Saykha area within PCPIR



# PCPIR Infrastructure Development

## Water, Gas & Telecom



### Water

#### Existing

- ▶ GIDC supplies 33 MGD raw water drawn from Narmada river . GWSSB provides drinking water through Narmada Canal

#### New Developments

- ▶ Water supply scheme for 50 MGD water from Miyagam Branch Canal (130 km) and 25 MGD water from Narmada River (60 km). Work of both the schemes is in progress
- ▶ Proposed investment for 50 MGD scheme is INR 429.79 crore
- ▶ Proposed investment for 25 MGD scheme is INR 212.76 crore



### Gas Supply

#### Existing

- ▶ Gujarat Gas Company Limited (GGCL) currently owns and operates nearly 900 km of distribution pipelines in Bharuch district.

#### Proposed

- ▶ All gas suppliers to extend network



### Telecom Services

#### Existing

- ▶ Network of BSNL and private companies.
- ▶ WLL - BTS available at Dahej and Vagra

#### Proposed

- ▶ Broadband (Tier II)
- ▶ Broadband (DSLAM)
- ▶ Wimax facility to be provided by BSNL



# PCPIR Socio-Economic Development

PCPIR Welfare Society, registered under the societies Registration Act formed

GIDC Charges an additional amount of INR 15 per sq. mtr. of industrial plot allotted-An amount of INR 37.00 crores so far collected

PCPIR Welfare Society to modernize Pakhajan PHC at a cost of INR 55 lakh

PCPIR Society Sponsors more than 350 land losers towards Rs. 1500/- monthly stipend & tuition fees of Rs. 15, 700 per year for technical training through 3 Skill –Upgradation centers

Dahej Health & Welfare Society registered to set up a 50 –bed modern Hospital at Dahej at a cost of INR 18 crore

INR 35 lakh sanctioned by GIDC for construction of a model police station in Dahej. Land allotted free of cost

Society has sanctioned Rs. 1.7 crore towards building toilets in 16 PCPIR villages of Vagara Taluka

GIDC has developed basic infrastructure such as internal roads & water supply in 10 villages and GIDC has so far spent 12.37 Crore till today (Total cost: 26 crores)

GIDC is operating a water supply scheme set up at a cost of INR 8 crore to supply potable water to 5 village in Dahej area.

Model anganwadi-cum-livelihood centers to be built by GIDC in all the 44 villages of the PCPIR

The existing industrial units have given employment to over 28,000 people in Dahej PCPIR

# Major Units in PCPIR





***Thank You***

**Gujarat Industrial Development Corporation (GIDC)  
(A Government of Gujarat Undertaking)  
2nd Floor, Block No.4  
Udyog Bhavan, Sector 11  
Gandhinagar 382 017  
Gujarat, India  
Phone: +91 79 23250636/37  
Fax: +91 79 23250705  
gidc@gidcgujarat.org  
www.gidc.gov.in**